



Erasmus+ incoming student guide



Funded by
the European Union

CONTENTS

Foreword	2
Few words about Romania and Galati	2
• History	2
• Public holidays	4
• Weather	4
About the university	5
Before the mobility	9
• Application	9
• Romanian language course	10
• Academic calendar & Grading scale	11
• Host country formalities	11
• Transportation	12
During the Mobility	14
• Enrolment procedure	14
• Attendance	14
• Welcome & Orientation Day	15
• Residence permit / Certificate of registration	15
At the end of the mobility	17
Accommodation	17
Cafeterias/Canteens	19
Erasmus Student Network	20
Sport facilities and leisure activities	21
Practical information	23
• Money	23
• Postal Service	23
• Mobile Phones, Telephone & Internet	23
• Emergency number	23
Miscellaneous facts	24
• Opening hours	24
• Cost of living	24
• Shopping	25
• Food	26
• Vocabulary and some expressions	27
Contact information	28
Maps	27

FOREWORD

Dear Student,

We are thrilled that you have chosen "Dunarea de Jos" University of Galati (UGAL) as your Erasmus+ destination. This guide includes some practical and useful information both about our university and the city of Galati and we hope it will be your helpful companion, from preparing for your journey to navigating your first days at the university.

Get ready to immerse yourself in new experiences, meet amazing people, and explore all that Romania, Galati and UGAL have to offer.

FEW WORDS ABOUT ROMANIA AND GALATI

History

The name "Romania" comes from the Latin word "Romanus" which means "citizen of the Roman Empire". *Authentic*, *Natural* and *Cultural* are the words that best capture the essence of Romania, a dynamic country rich in history, arts and scenic beauty.

Romania offers countless unique travel experiences that are waiting to be discovered. A journey of three or four hours, by car or train, can take you from the Danube River to a beautiful, intact, medieval town; from Bucharest - Romania's capital city - to the Black Sea; from Southern Transylvania to the historic regions of Bucovina or Maramures.



Galati town itself developed from an ancient Dacian settlement of the sixth and fifth centuries BCE where there was a ford across the Danube River. In 101 to 102 and 105 to 106, the Dacians fought wars against the Romans and the area became part of the Roman empire. A strong



Roman fortress was built at Barbosi to defend the ford across Danube. From the 300s a Daco-Roman settlement developed at a ford south of the site of the Church of the Virgin.

For more information about Galati, you can use **Galati City app** available for IOS and Android.

Visiting Romania and Galati while you study will give you the opportunity to comprehend Romania's cultural and historical richness.

In Galati, we have many museums, including archaeological and contemporary and all students get a discount, based on the student card

For more information about the museums, check:



https://www.tripadvisor.com/Attractions-g304059-Activities-Galati_Galati_County_Southeast_Romania.html

Romania's cultural scene thrives with festivals like the Transylvania International Film Festival and George Enescu Festival, celebrating global music and arts.

The country also hosts popular music festivals, such as Untold and Electric Castle, attracting international DJs and music lovers. Traditional events, like the "Hora de la Prislop", showcase vibrant folk dances and crafts. Medieval festivals, like the Sighișoara Medieval Festival, offer immersive experiences with reenactments and historical performances.



Public holidays

St. Andrew's Day: 30 November

Romanian National Day: 1st of December

Christmas: 25-26 December

New Year's Days: 1st and 2nd of January

Union Day: 24 January

Easter: 10-14 April

Labor Day: 1st of May

Children's Day: 1st of June

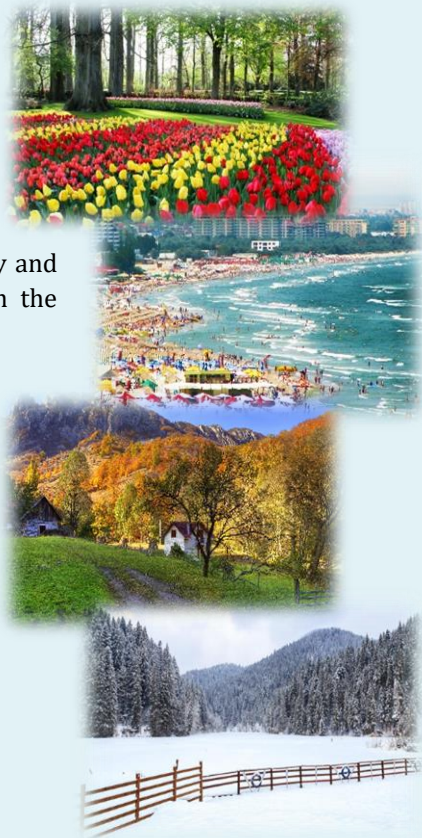
Assumption of Mary: 15 August



Weather

Romania has a temperate climate, with four distinct seasons:

- *Spring* is pleasant with cool mornings and nights and mostly warm days;
- *Summer* is quite warm, with extended sunny days. The hottest areas in summer are the lowlands in southern and eastern Romania where 37°C is often reached in July and August. Temperatures are always cooler in the mountains;
- *Autumn* is dry and cool, with fields and trees producing colorful foliage;
- *Winters* can be cold, especially in the mountains. While not the rule, abundant snowfalls may occur throughout the country, from December to mid-March. There are significant regional differences of the climate between different regions of Romania.



For more information on the weather, check:

<https://www.accuweather.com/en/ro/romania-weather>.

ABOUT THE UNIVERSITY

UGAL, the oldest and most important higher education institution in Southeast Romania, has a recognized tradition and identity across various fields.

Its mission is to continue Romania's higher education tradition through quality education, efficient learning, competitive research, and community services, while developing skilled graduates for professional and social success.

It is a university with its own assets and adequate research infrastructure, and it has strong international cooperation through student and staff exchanges, curriculum design, and scientific collaborations, functioning as a key international center.

UGAL is a public institution which supports and promotes the development of specific professional values within the local, regional, national and international community. In the present day context, these values are the following:



- culture actively based on innovative and systematic knowledge;
- culture of scientific and technological competences, organizational and civic competences;
- culture for innovative learning, personal and moral development, pro-active attitude and participation;
- culture for integration in diversity, with respect for identity and reciprocity;
- culture for developing human resources and valorizing all qualifications obtained by graduates of all study cycles in the university.

The vision of the university is based exclusively on generating knowledge through scientific research, on transmitting knowledge through education and professional training, and on valorizing knowledge through technological innovation.

The academic community and the study programmes are the following:

- over 18 000 students (preparatory year, pedagogical training, postdocs included)
- 10.070 bachelor students
- 3330 master degree students
- 481 PhD students
- 1504 staff (teaching, non-teaching, administrative)
- 14 faculties;
- over 90 Bachelor study programmes;
- over 70 Master study programmes;
- 5 Doctoral schools;
- over 20 doctoral domains;
- 129 scientific coordinators
- 1 micro production and assembly hall
- 1 station for periodical technical inspection of vehicles



The university library has over 600,000 volumes distributed through five fully library units placed in the whole campus. The library has been computerized so one can find information from a variety of sources including books, newspapers, and journal articles. The library is open throughout the week.



UGAL has concluded more than 400 inter-institutional agreements with universities from over 70 EU and non-EU countries.

All types of activities are carried out in optimal conditions in:

- 14 faculties
- 38 research centers;
- 3 student campuses with 11 dorms (accommodation for 2800 students);
- 3 cafeterias/canteens;
- 12 reading rooms;
- 1 student chapel;
- 2 gyms;
- 1 medical office
- 1 first-aid point



FACULTIES

- Faculty of Engineering
- Faculty of Naval Architecture
- Faculty of Food Sciences and Engineering
- Faculty of Automation, Computer Sciences, Electronics and Electrical Engineering
- Faculty of Physical Education and Sport
- Faculty of Letters
- Faculty of Sciences and Environment
- Faculty of History, Philosophy and Theology
- Faculty of Engineering and Agronomy in Braille
- Faculty of Economics and Business Administration
- Faculty of Law and Administrative Sciences
- Faculty of Medicine and Pharmacy
- Faculty of Arts
- Cross-Border Faculty (with subsidiaries in the Republic of Moldova)
- Subsidiary of the Faculty of Medicine and Pharmacy in Enna - Italy



BEFORE THE MOBILITY

The home university **nominates** the students who will carry out an Erasmus+ mobility for studies/traineeship at “Dunarea de Jos” University of Galati.

Deadlines for student nomination:

Autumn semester: **15 May**
Spring semester: **15 November**

Then, our Erasmus Office contacts you and provides information about the application procedure.

Application

List of requested documents for the APPLICATION FILE

(<https://www.en.ugal.ro/studies/erasmus-programme/application-file>):



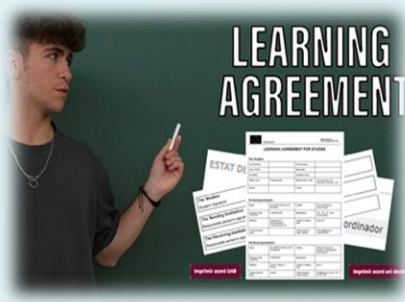
- Application form
- Learning Agreement
- Transcript of Records in English
- ID card/passport
- European Health card (for **EU** students)
- Health certificate issued by family doctor (in English, for **non-UE** students)

1. Application form

- Fill in the Application form using a computer and avoid formatting the document.
- Send it in **WORD** format to the Erasmus Office for verification.
- After verification by the Erasmus Office, signed it (you and your institutional coordinator).
- Send it to erasmus@ugal.ro.

2. Learning Agreement (LA)

- Fill in the LA with information in the Course Catalogue (<https://en.ugal.ro/studies/erasmus-programme/course-catalogue>).
- The **language of instruction** in most of the departments is mainly **Romanian**. However, these Departments offer assistance (tutorials), course notes and examination in English.



- Send it in **WORD** format to erasmus@ugal.ro for verification by the academic coordinator at UGAL.
- After verification by the Erasmus Office, sign it (you and your academic coordinator).
- Send it to erasmus@ugal.ro

For more instructions, check:

[https://en.ugal.ro/files/erasmus/2020/10/How to use the Learning Agreement for Studies.pdf](https://en.ugal.ro/files/erasmus/2020/10/How%20to%20use%20the%20Learning%20Agreement%20for%20Studies.pdf)

Deadlines for sending the documents:

Autumn semester: **15 June**
Spring semester: **1st December**

After successfully fulfilling the application procedure according to the deadlines above, **the receiving institution** will send you its **decision within 4 weeks**. You will receive **the Learning Agreement** signed by the academic coordinator of UGAL along with a **letter of invitation** for a study/placement mobility (if requested by your university).

Romanian language course

Most bilateral agreements between our institutions (with the exception of the study domain Languages, Management and Medicine) mention that the **language of instruction 1 is Romanian** (didactic activities) and the **language of instruction 2 is English (only for tutoring)**.



Consequently, our university organizes before the beginning of each semester a **two-week course in Romanian language** for incoming students. The course is **free of charge** and students are strongly recommended to attend it.

The two-week period of the course will be included in the **Attendance Certificate** that we shall issue at the end of your mobility.

Academic calendar & grading scale

The academic year consists of two 14-week semesters. The Autumn Semester lasts from October to mid-February and the Spring Semester, from mid-February to the end of June.

For the calendar for each academic year, check:

https://ugal.ro/files/erasmus/2025/04/Academic_calendar_2025-2026.pdf

Absolute or Relative Grading System can be used for assessment of the students. The system to be used is announced before the beginning of the academic year after the decision and approval by the University Senate. All assessment procedures are based on ECTS Credits.

GRADING SCALE

Mark	Degree	Grade
1-4	Fail	FX
5	Sufficient	F/E
6	Satisfactory	D
7-8	Good	C
9	Very Good	B
10	Excellent	A

Host country formalities

Visa (non-UE) students

1. NON-UE students wishing to study in Romania need to have a **valid passport**;
2. Before travelling, it's necessary a student visa obtained from a Romanian Embassy/Consulate.



Contact the nearest Romanian Embassy or Consulate in your country for the most up-to-date and detailed information. For further information, please check: <http://evisa.mae.ro/home>.

ATTENTION TO: Visas cannot be obtained within Romania.

Erasmus Office will send to you the **Letter of Acceptance**, which is necessary for the visa application procedure.



Health Insurance

We strongly recommend you to get a **health insurance** available for the entire period of stay in Romania.

a) EU CITIZENS

If you unexpectedly fall ill during your stay, you are entitled to an **emergency medical treatment**, based on your **European Health Card** –

b) NON-EU CITIZENS

You should purchase **private health insurance** in your home countries before departure.



Transportation

If you **land** on Henri Coanda **Airport**, (OTP) in Bucharest, please choose the correct exit gate for your luggage pick up.

We **recommend** exchanging just a **small amount of money**.

From Bucharest to Galati, there are two ways:

- by **train**, the average cost of a 2nd class train ticket is 75-85 lei (15-17 €). Check <https://www.cfrcalatori.ro/en/>.
- by **bus** directly from the airport, check: <https://www.transfero.ro/en/galati-otopeni-2/>.



The cost of the bus ticket is depending on the company and the average is 70-100 lei (15-20 €).

Local transportation in Galati

1. **public transport** (tram and city busses), After you have been issued a student card by UGAL, you may apply for a **student travel pass** (you will have student discount) to be used on.
2. **taxi** (local companies: As, Samataxi, Smart, Albertini, etc.) and prices are between 3.4 and 3.7 lei/km (70-80 € cents/km)
3. **uber, bolt.**

For more information about the timetable, maps you can use **Moovit** application available for IOS and Android.



DURING THE MOBILITY

All the meetings at the Erasmus Office are scheduled. According to your arrival date, we will invite you to our office. The address is: 47, Domneasca St., ground floor.

Steps to be taken:

- Erasmus Office sends Certificate of Arrival to student's home university.
- UGAL academic coordinator prepares timetable of didactic activities.
- Together with UGAL academic coordinator, student makes changes **to the Learning Agreement** (no later than 2-3 weeks since your arrival) in case of timetable conflict or subjects that need to be replaced.
- Student contacts UGAL academic coordinator about all academic matters.
- Student checks regularly email address for important notifications/messages.

Enrolment procedure

After enrollment, you will be issued a **student card** which enables you to benefit from all **UGAL** student privileges (e.g. discounts for local transportation)

Our university has negotiated some **discounts** with local partners for students and staff, which you might find attractive (check: <https://en.ugal.ro/informatii/partners>).



Attendance



All didactical activities (courses, labs, practical activities etc.) **are compulsory for all students, Erasmus+ incoming students included.** Once enrolled, the Erasmus+ incoming students have the same rights and obligations as any other student.

Welcome & Orientation Day

A Welcome & Orientation Day for incoming exchange students is arranged twice a year, at the beginning of each semester. It's an opportunity to learn about the people and resources that can help you make your stay at UGAL both relevant for your future career, and enjoyable, and it introduces you to our campus but not only.



Residence Permit (non-EU citizens)

1. If the mobility period is less than 90 days, you do not need a Residence Permit.
2. If the mobility period is longer than 90 days, you need to apply for the residence permit.

Documents required:

- application;
- border crossing document (passport) original and duplicate;
- certificate from UGAL;
- proof of legal ownership (the contract of accommodation), original and duplicate;
- letter of acceptance for the studies (copy and the translation) issued by the Erasmus Office;
- medical certificate issued by the doctor of UGAL that certifies that you do not suffer from diseases that may pose a threat to the public health. Students enrolled at **UGAL** are usually given residence permits that are valid for the exchange period as indicated in the invitation letter.



You may extend your residence permit if you are extending the enrolment at **UGAL**. Extension requires the same procedures as applying for a new residence permit with one exception, a tax of ~259 Ron (~50 Euro).

For more information, please check here: <http://igi.mai.gov.ro/en/content/studies>.

Lost passport and/or residence permit



1. If you **lose your passport** while in Romania you must report it to your country's Embassy/Consulate in Romania (they are mainly situated in Bucharest). They will issue you an emergency passport.
2. If you **lose your residence permit**, you must first report this to the closest police station at the place of the incident. Please do not forget to get a copy of the report that the police holds about this incident. The office will provide you another document for the application of a new residence permit.
3. Inform the Erasmus Office at **UGAL**.

Certificate of registration (EU Citizens)

As EU students, it's necessary to apply for the **certificate of registration**.

Documents required:

- application;
- border crossing document (travel document) original and duplicate;
- academic certificate from UGAL;
- European Health Card;
- proof of legal ownership (the contract of accommodation), original and duplicate.



We strongly recommended students to apply either for the residence permit or the certificate of registration **within one month after entering Romania**. The Erasmus Office will assist you in preparing all the documents.

If you **change the address** that you initially gave to the Erasmus Office, you **must inform** the Immigration Office and the Erasmus Office about this change within 2 days (48 hours).

AT THE END OF THE MOBILITY



Examinations In addition to midterm examinations and other work, students are required to take a final examination. Final examinations details (room, date, hour) are decided and announced by the faculty.

Students may be approved a make-up examination (re-sit session) if they provide valid reasons. If, for some reason, you cannot sit in for your exam, please inform your academic coordinator.

Steps to take

- **Notify** Erasmus Office about your departure, at least 1 week before leaving Galati/Romania, in order to get the Certificate of Attendance.
- **Make sure** you paid accommodation for the whole period keep all receipts.

Remember:

- **TOR** is issued both in English and Romanian, no later than 4 weeks after the exam session ends.
- The UGAL Erasmus Office sends a scanned copy by email to you and your home university and also posts the original document to your university.

ACCOMMODATION

Student dormitory

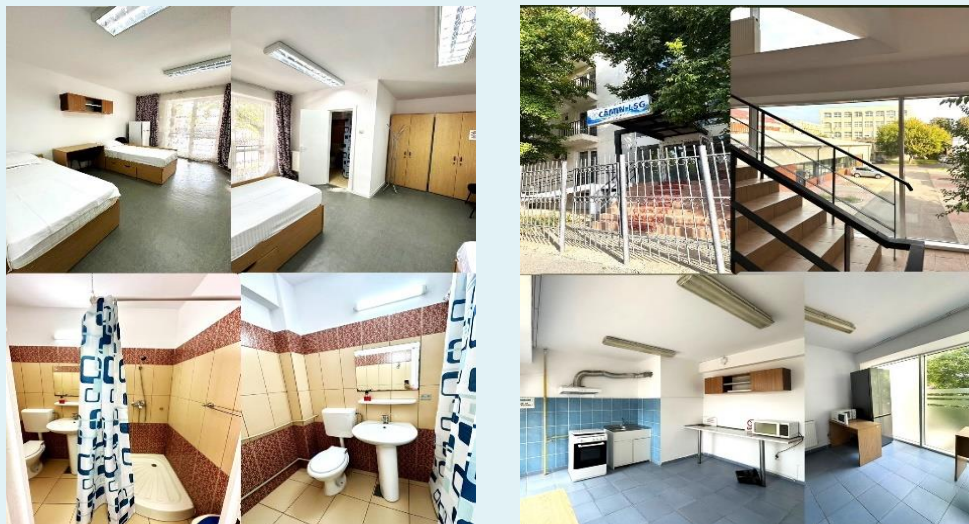
The university offers accommodation to 60 incoming exchange students in 2 new and fully renovated dormitories: LSG and A.

Allocations are on a first come, first served basis, based on the filled in accommodation form that will be sent to all the incoming student.

The student dormitories have a 24/7 reception desk. They are comfortable and suitable for accommodation and study purposes, with all necessary facilities including LED TV, common kitchen on every floor (equipped with fridge, electric stove, microwave, electric mugs), self-service laundry room, study rooms and Wi-Fi internet access. For security reasons, there is CCTV (video surveillance) on every level/floor.

Students can be accommodated in double or triple room, having the bathroom in the room, or in the module (2 rooms). The price per person (all utilities included) are around 100 euros and may be subject to change.

Dorm LSG



Dorm A



Private accommodation

You may rent a flat for approximately 300-350 Euro/month, facilities excluded.

The easiest way to find a flat is to do some research on the internet or knock the door of a real estate agency in the university neighborhood.

Take into consideration paying a **deposit** (equal to approx. one-month rent), whether you are renting the flat directly or through an agency, which will be reimbursed at the end of the tenancy contract if you hand in the flat in good condition.

Cafeterias/Canteens

On all campuses there are 3 cafeterias where students and staff are served lunch at a very reasonable price (15 Ron \approx 3 €). Moreover, you can access the link of the official website to check the daily updated menu-
<http://campus.ugal.ro/ro/meniu/>



Addresses & working hours (weekday)

1. Canteen building J - Domneasca St., 800201, in Campusul „Științei” – Monday to Friday – 12:00 to 15:30
2. Student Canteen – Domneasca St., 155 „Alexandru Ioan Cuza” University Campus – Monday to Friday 12:00 to 17:30
3. Canteen building U - on 47 Domneasca St. – Monday to Thursday 12:00 to 15:30, Friday 12:00 to 14:00



Erasmus Student Network



The Erasmus Student Network (ESN) supports and connects international students by offering a range of social, cultural, and academic activities. It is part of one of the biggest student associations in Europe, active in over 40 countries and the mission is “students helping students”, adopting to life in a new country by providing essential information, guidance, and integration opportunities.



Through local and international events, CS ESN Galați fosters intercultural exchange and encourages global collaboration among students, organizing events and activities that bring international and local students together—such as welcome events, sport activities, cultural nights, city tours, parties, and more.

The **Erasmus Buddy Program** pairs international students with local students to help you settle into your new environment and navigate cultural differences. Buddies offer support with practical matters, such as housing, transportation, and local customs, making the transition smoother for Erasmus participants.

Whether you need help adjusting to life in Romania, want to make friends, or just have fun, CS ESN Galați is here for you.



SPORT FACILITIES AND LEISURE ACTIVITIES

The social and cultural activities organized in our city are diverse and UGAL also provides students with many alternative opportunities for leisure.

Galati offers a diverse range of cultural and social activities for students. UGAL hosts various lectures, seminars, workshops, and performances throughout the year, featuring guests from academic and artistic fields.

The city also offers leisure options like the Adventure Park with its obstacle course and zip lines, outdoor sports facilities such as tennis and volleyball courts, as well as activities like marathons, football, and horse riding in Garboavele Forest.



For culture lovers, the “Fani Tardini” Dramatic Theatre and the National Opera and Operetta Theater “Nae Leonard” stage a variety of plays, from classical works to modern productions.

The Museum of Visual Arts regularly hosts exhibitions of both Romanian and international artists, while local music festivals celebrate genres such as jazz, rock, and classical.

Additionally, Galati holds literary events, book launches, and dance performances, creating a dynamic cultural scene for all tastes.

Student Cultural Centre

With a history of over 50 years, the Student Cultural Centre has a wide range of educational, artistic, cultural projects and activities, including sports events.

The Centre's facilities include:

- a theatre room – for the rehearsals of the theatre clubs;
- a music room – for the rehearsals and the recordings of the music bands;
- a mirror room – for the rehearsals of the dance, theatre, fashion, aerobics and aikido clubs;
- the main Stage Hall – with a total capacity of 350 seats, it hosts main events such as the Freshmen's Ball, conferences, big performances, plays;
- the Studio room – it can seat 90 people and it hosts smaller conferences or events;
- an additional Conference room – with 20 seats;
- a photo studio.



Some of the activities are:

- The “Baladele Dunării” National Student Folk Music Festival;
- The “S’live rock” National Student Rock Music Festival;
- The National Breakdance Festival;
- The “ActFest” National Student Theatre Festival;
- The “Extravagance” National Student Fashion Festival;
- The “Operațiunea Monstrul” National
- Student Competitive Fishing Contest.



The Cultural Centre also hosts poetry clubs, debate clubs, tourism clubs, etc.

PRACTICAL INFORMATION

Money

- The currency in Romania is LEU (RON).
- Most ATMs accept international credit cards or bank cards (a strip of logos is usually displayed above the ATM).
- Almost all ATMs have a **language key** to enable you to read the instructions in English.
- Most commercial establishments accept **international credit cards**, such as Visa, Master Card and American Express.
- The value-added tax, here called TVA, is 19%. Value-added tax is included in quoted prices.

Postal Service

1. Post offices are open from 8:00 to 18:00 Monday to Friday and 9:00 to 13:00 Saturday.
2. All post offices branches have the facilities to exchange money at the current international exchange rates.
3. There is also an express postal service, 24 h from Monday to Saturday, for letters, documents and small packages.

Mobile Phones, Telephone & Internet

Major GSM operators in Romania are Digi, Orange, Vodafone and Telekom.

You can use your mobile phone in Romania if your provider has enabled international **roaming**. However, for exchange students we recommend that you buy a **local prepaid SIM card** here. Romania has very wide coverage networks so you shouldn't have any problems with your calls.

Emergency Number

Dialing **112** is a fast way to communicate with the emergency dispatcher centers (Police, Fire Brigade, Ambulance) in case of emergency.

MISCELLANEOUS FACTS



OPENING HOURS OF....

Government Offices	08.00-16.30	Monday-Thursday
	08.00-14.00	Friday
	Closed Saturday and Sunday	
Banks	09.00-17.00	Monday to Friday
	Closed Saturday and Sunday	
Shops	09.00-20.00	Monday to Friday
	09.00-15.00	Saturday and Sunday

Cost of living

The estimated cost of living is 350-450 Euro/month. This includes meals, accommodation and local transport.



Milk (regular, 1 liter)
Average: 10 Ron (2 €)



Water (2 liter bottle)
Average: 3 Ron (70 € cents)



Chicken Breasts (boneless) (1 kg)
Average: 25 Ron (5 €)



Eggs (10, large)
Average: 10 Ron (2 €)



Tomatoes (1 kg)
Average: 7 Ron (1.5 €)



Local Cheese (500 gr)
Average: 10 Ron (2 €)



Potatoes (1 kg)
Average: 4 Ron (0.8 €)



Domestic beer in the supermarket (0.5 l)
Average: 5 Ron (1 €)



Loaf of Fresh White Bread
Average: 3 Ron (60 € cents)



One-way Ticket (local transport)
Average: 3.5 Ron (70 € cents)



Cinema, 1 seat
Average: 30 Ron (6 €)



Restaurant Meal (1 drink included)
Average: 50 Ron (10 €)

Shopping

In Galati, the main shopping areas for food, clothes, toys, presents, electric-electronic items etc. is Shopping City Centre Galati. Other various sized shopping malls where you can find almost everything are: Winmarkt Galati and Dunarea Mall.

For more information about the shopping areas please visit:
<https://www.winmarkt.ro/en/>.



The Romanian cuisine is a diverse blend of different dishes from several traditions with which it has come into contact, but it also maintains its own character.

There are quite a few different types of dishes, such as: *ciorba*, which includes a wide range of soups with a characteristic sour taste. (may be meat, vegetable soups, tripe and calf foot soups, or fish soups, all of which are soured by lemon juice, sauerkraut juice, vinegar, or *bors* - traditionally made from bran). **Tuica** (plum brandy) is a name for a strong alcoholic drink in Romania.

Galati is known for events like the "Festivalul Gastronomic al Dunării," where visitors can enjoy traditional fish dishes from the Danube River, including the famous "saramură" (salted fish). Another popular event is the "Târgul de Produse Tradiționale," where local artisans and farmers showcase homemade cheeses, cured meats, and other regional specialties.

For more information about traditional Romanian cuisine please visit:

https://ro.wikipedia.org/wiki/Bucătăria_româneasca



Vocabulary and some expressions

Hello!	Bună!	Man	Bărbat
Good morning!	Bună dimineața!	Woman	Femeie
Good evening!	Bună seara!	Boy	Băiat
Good night!	Noapte bună!	Girl	Fată
Goodbye	La revedere/Pa	Hospital	Spital
Yes	Da	University	Universitate
No	Nu	Book	Carte
Please	Te rog	Library	Bibliotecă
Thanks	Mulțumesc	Right	Dreapta
Excuse me	Scuză-mă	Left	Stânga
Breakfast	Mic dejun	Entrance	Intrare
Lunch	Prânz	Exit	Ieșire
Dinner	Cină	City	Oraș
Food	Mâncare	I love you!	Te iubesc!
Drink	Băutură	My name is...	Mă cheamă...
Beer	Bere	Cheers!	Noroc!
Tea	Ceai	One beer, please!	O bere, te rog!
Coffee	Cafea	Help!	Ajutor!
Fruit Juice	Suc de fructe	You're welcome!	Cu plăcere!
Water	Apă	How much is this?	Cât costă?
Ticket	Bilet	Bill please!	Nota, vă rog!
Bus	Autobuz	Very/lot/many	Mult
Street	Stradă	How are you?	Ce mai faci?
Road	Drum	I don't understand	Nu înțeleg
Airport	Aeroport	Next stop	Următoarea oprire
Plane	Avion	Drop me here!	Lasă-mă aici!
Train	Tren	Any discount?	Are reducere?
Money	Bani	Any exchange office?	O casă de schimb?

CONTACT INFORMATION

Name of institution: ***Dunarea de Jos University of Galati***

Erasmus ID code: **RO GALATIO1**

Assoc. prof. George-Adrian IFRIM
Director of the International Relations Department

Erasmus Office team

Adriana PETRESCU
Erasmus+ outgoing student mobility coordinator

Tatiana COJAN
Erasmus+ incoming student mobility coordinator

Bianca-Elena DAMICIUC
Erasmus+ staff coordinator

CONTACT DETAILS

Address: 47 Domneasca St., 80008, Galati

Tel: +4 0756 063 672

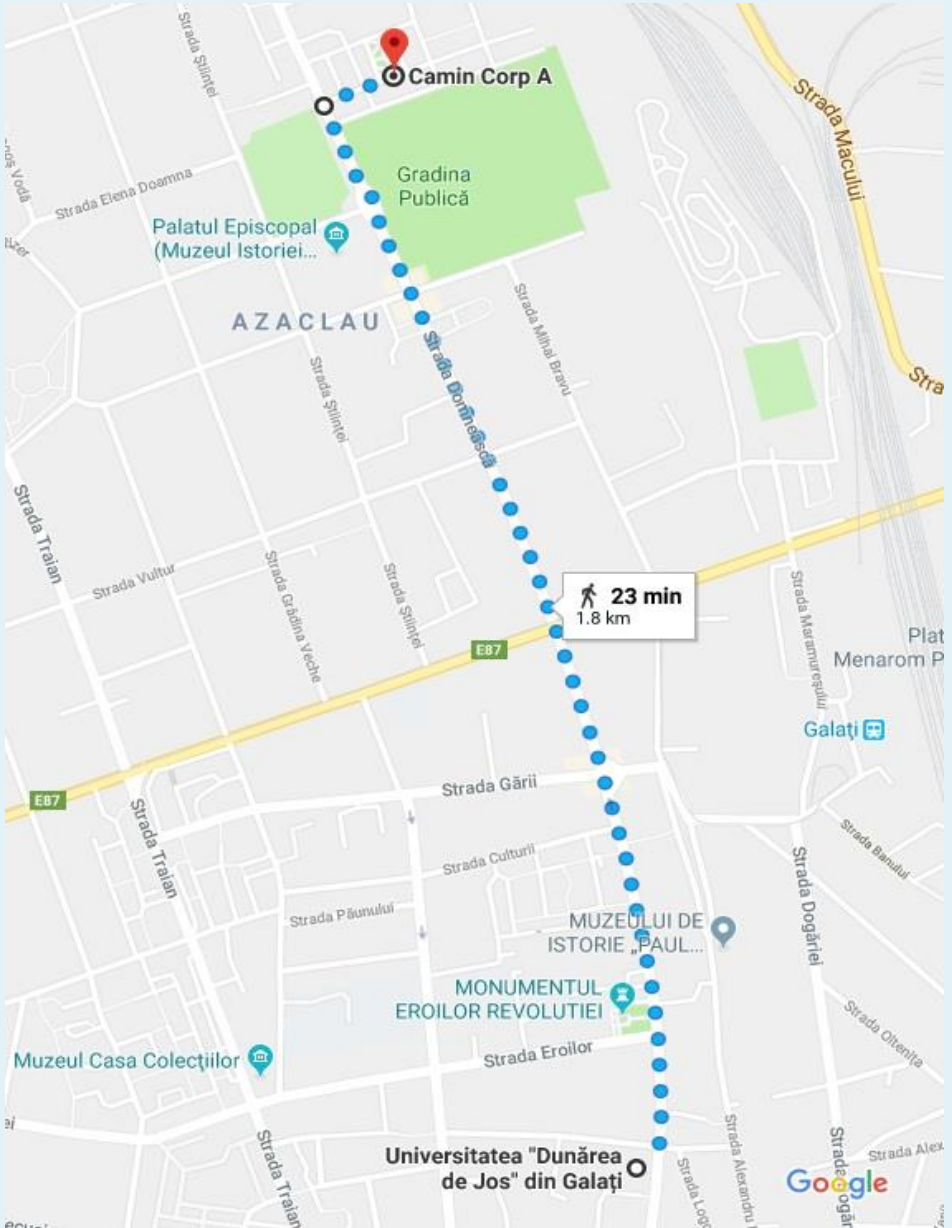
E-mail: erasmus@ugal.ro

Facebook: [@erasmusudjg](https://www.facebook.com/erasmusudjg)

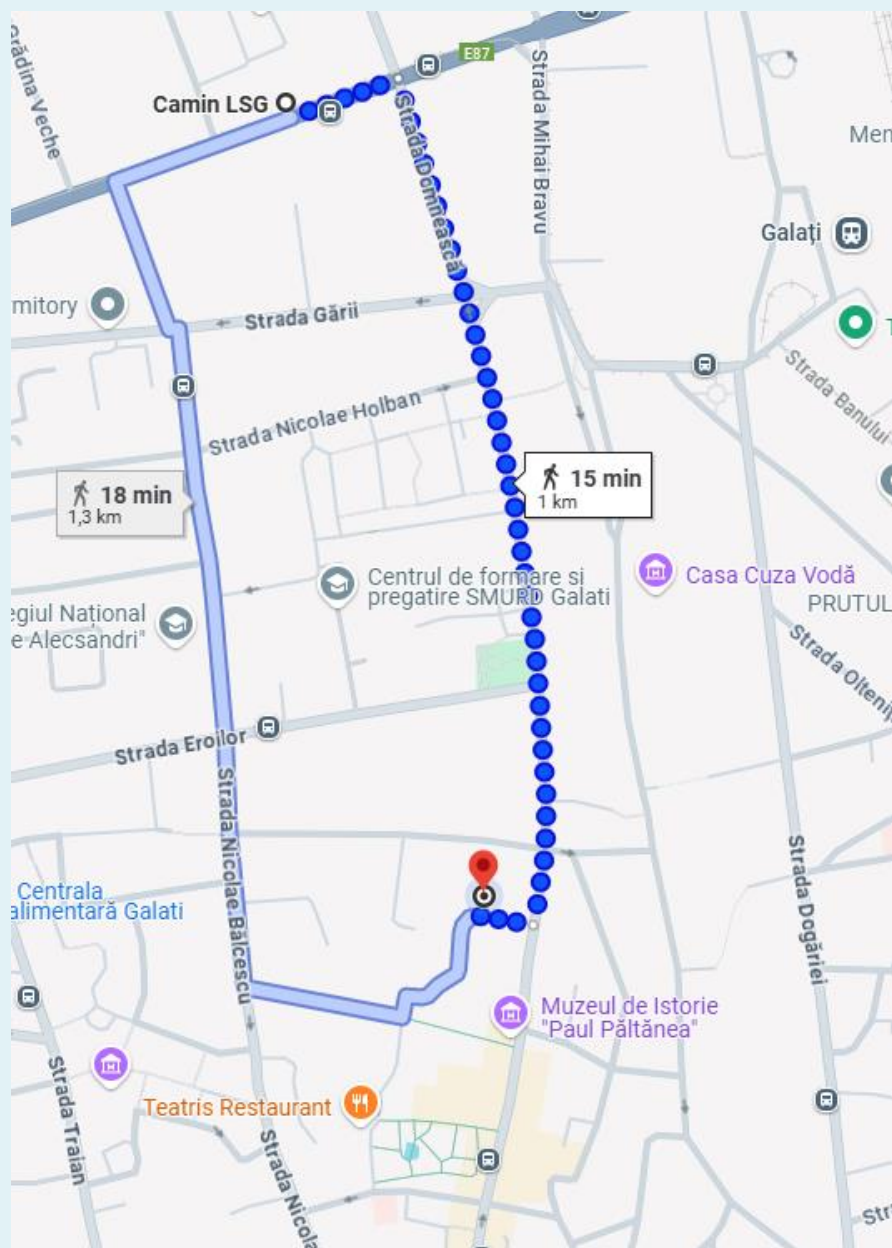
Instagram: [@erasmus_udjg](https://www.instagram.com/erasmus_udjg)

MAPS

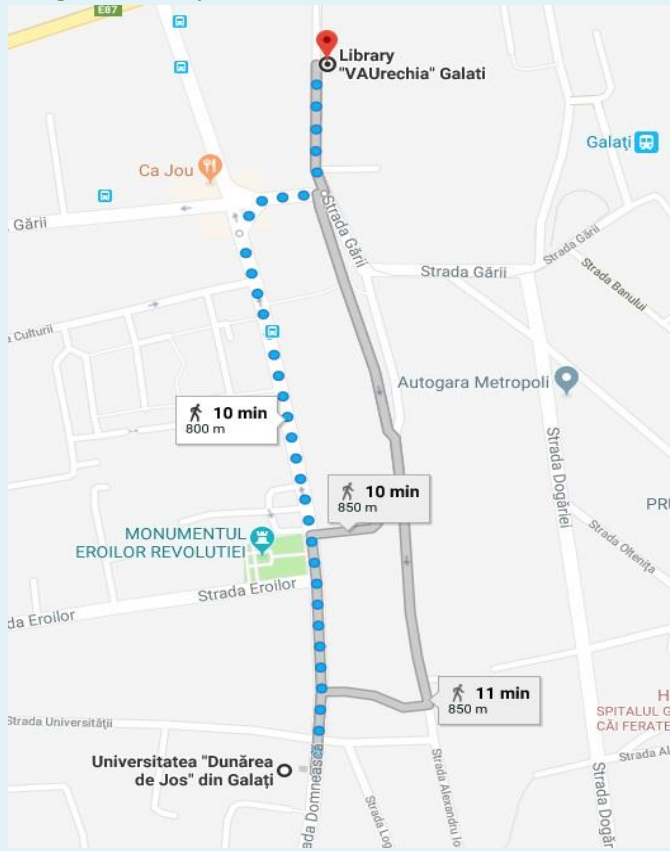
- The student dorm (A) is located at 4 Parcului St., building A.
- The Erasmus Office is located at 47 Domneasca St.



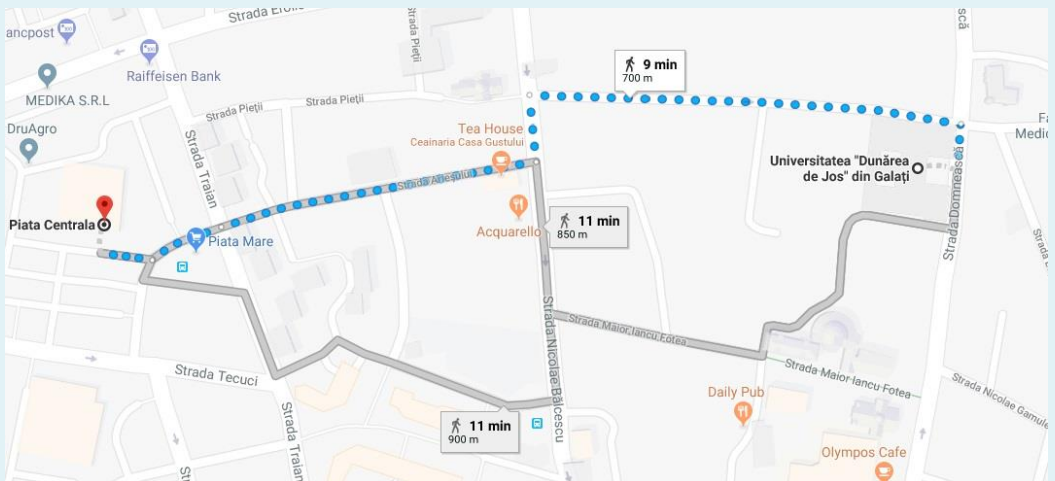
c. The student dorm (LSG) is located on 10 Basarabiei St.



d. The public library is located at 16 Mihai Bravu St.



e. The Central Market is located at 63 Traian St.



f. Winmarkt Shopping Centre (centre of the city)

